

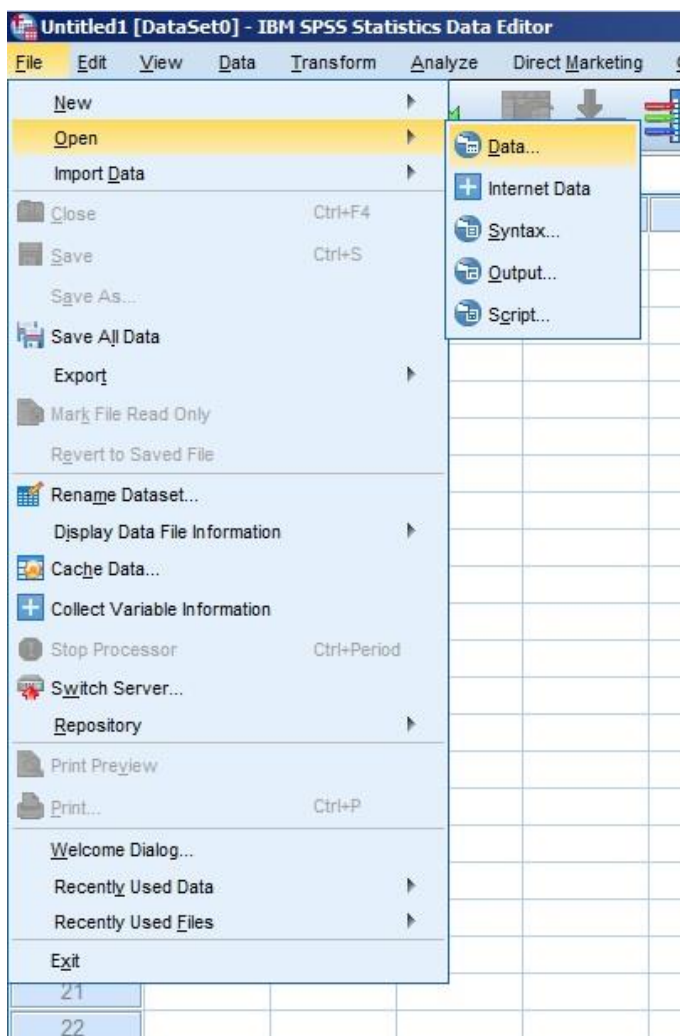
How to open a portable file (.por) using SPSS

Based on SPSS v24

This support document is designed to assist data users with how to open an SPSS portable file. A portable file ends in the extension “.por.” This document assumes that the SPSS program has been launched.

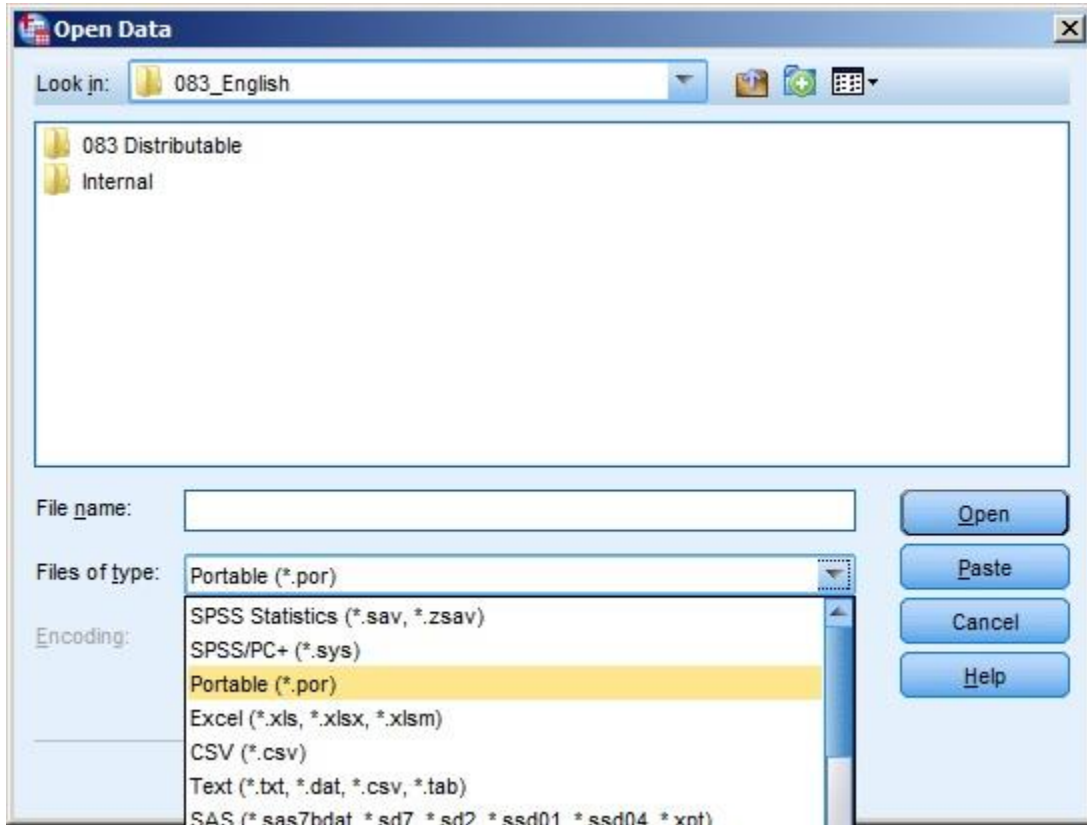
Step one: Once you have SPSS started, go to “File,” select “Open” followed by “Data...” as shown in Figure 1. This will launch the “Open Data” dialog window.

Figure 1. Screenshot showing how to navigate SPSS to launch the Open Data window.



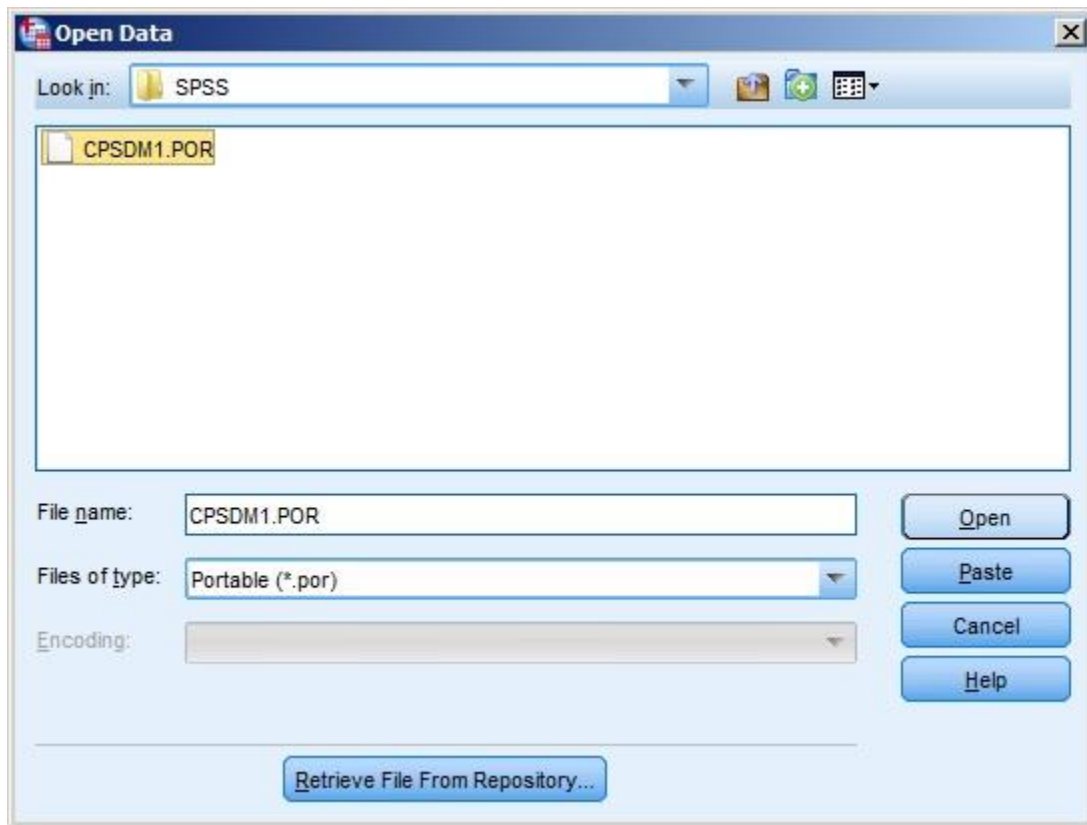
Step two: In the “Files of Type” section of the “Open Data” dialog window, click on the arrow at the far right side of the field. A list of file extensions will appear as shown in Figure 2. From that list, select “Portable (*.por).”

Figure 2. Screenshot of the Open Data window showing the drop down menu list associated with the Files of Type field.



Step three: Once you have selected “Portable (*.por)” from the “Files of Type” field, then use the “Look in” field to navigate to the portable file you want to open. Once you have navigated to your file, select it by clicking on it and the file name will appear in the “File Name” field towards the bottom of the window. Click “Open” to open the portable file in SPSS.

Figure 3. Open Data window screenshot showing a portable file selected.



Your data should now be viewable in the Data View window of SPSS.

Please submit questions to NDACANsupport@cornell.edu